



Sustainable Success:

Creating a Better Future for Business
and the Environment

Rob Friend

Executive Director, Minnesota Waste Wise Foundation

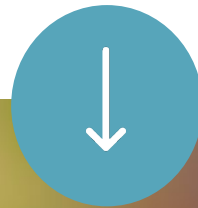


01. Who we are

03. Waste reduction

02. Energy efficiency

04. Get in touch





About Us

Who We Are

The Minnesota Waste Wise Foundation improves the environmental health and economic vitality of our communities by fostering sustainability principles in Minnesota based businesses and organizations.

**MINNESOTA
CHAMBER OF
COMMERCE**

GROWING MINNESOTA



Why be energy efficient?

- Reduce energy costs
- Environmental benefits
- Attract customers
- Employee satisfaction
- Improved comfort
- Energy security





How to operate an energy efficient business

- Host an energy audit
- Benchmark your energy usage
- Implement energy-saving practices
- Upgrade equipment when practical
- Use renewable energy sources





**No cost
or low-
cost
changes**



Program the
thermostat



Electronics



Preventative
maintenance



Vending
machines



Medium-cost changes



LED lighting



Foodservice equipment



EC Motors



Water heaters



Economizers



High-cost changes



HVAC



VSD air compressor



Demand-controlled kitchen ventilation

- Studies:**
- Compressed air study
 - Steam trap audit
 - Recommissioning
 - Energy design assistance



Rebates and Grants

For energy efficiency improvement projects



**Marshall
Municipal
Utilities
Rebates**



**Great Plains
Natural Gas
Rebates**



**Rural Energy
Efficiency Program
(REAP)**

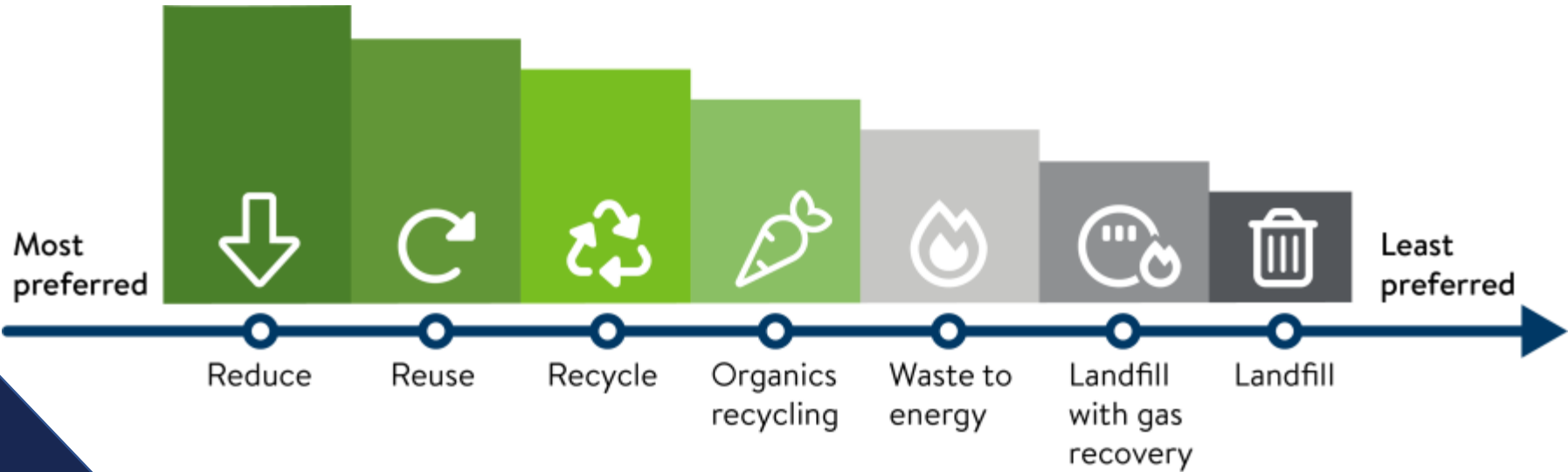
MinnPACE



In 2021, the state recycling rate
was

42.2%

Waste hierarchy



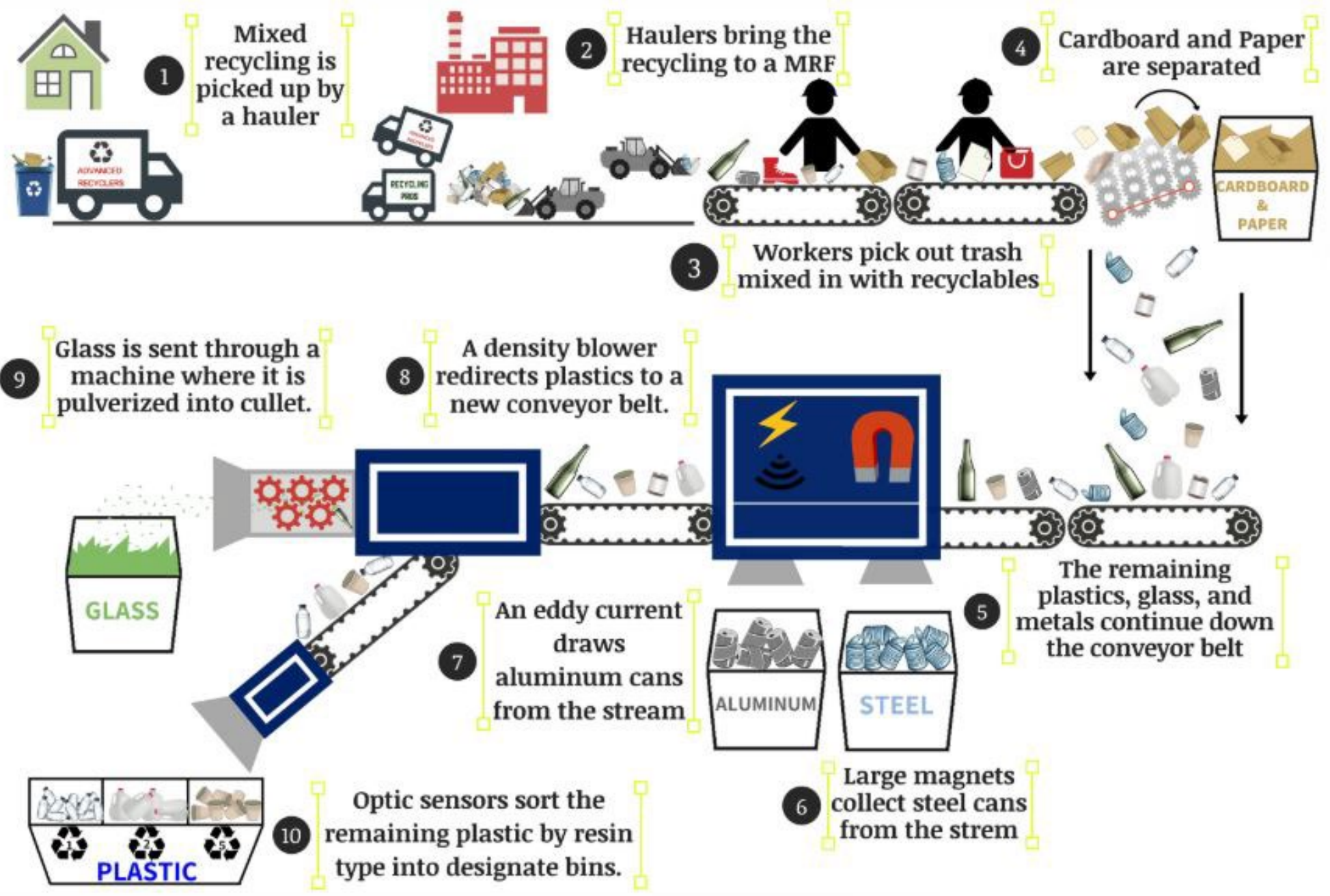
Recycling Works





Materials Recovery Facility (MRF)





Recycling right - tips

- Avoid “wish-cycling”
- “When in doubt, throw it out”
- Keep plastic bags out, bring to drop-off
- Keep caps on bottles
- Empty containers (at least “spoon clean”)
- Rigid plastic containers and bottles marked:
- Items smaller than fist = TRASH



Paper (all kinds/colors) & cardboard:



Paper cartons:



Metal cans & foil:



Plastic bottles, jugs & containers:



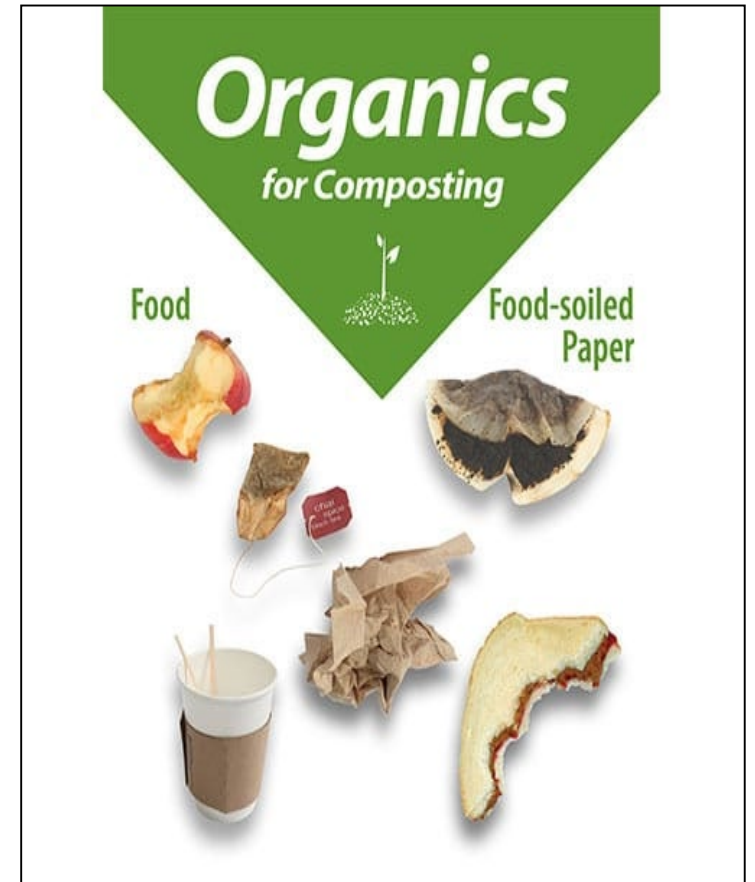
Glass bottles & jars:



RECYCLE RIGHT GUIDE

WHAT IS ORGANICS RECYCLING?

- Food Waste
- Coffee Grounds
- Food-Soiled Paper/Paper Towels
- BPI Certified Compostable Products



HOW DOES ORGANICS RECYCLING WORK?





Reduction methods for your business

Bins

- Color-coded, paired, labeled

Simplify for employees

- Totes, carts, cart tippers
- Enclosures and pads
- Lifts

Organics recycling

- Compostable bags
- Compostable and reusable dishware

Reduce

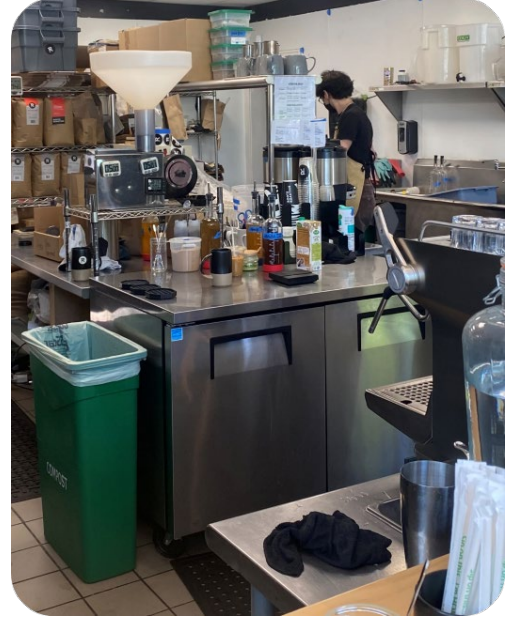
- Dishwashing equipment
- Water filling stations

Food recovery

- Refrigerators

Schools

- Sorting stations in cafeteria
- Food-to-hog program



Reduction Recycle Organics



Get Connected With Us

Contact Information

Rob Friend
651-292-3915
rfriend@mnchamber.com





THANKS

Follow Us On Social Media

@energysmart

@wastewise