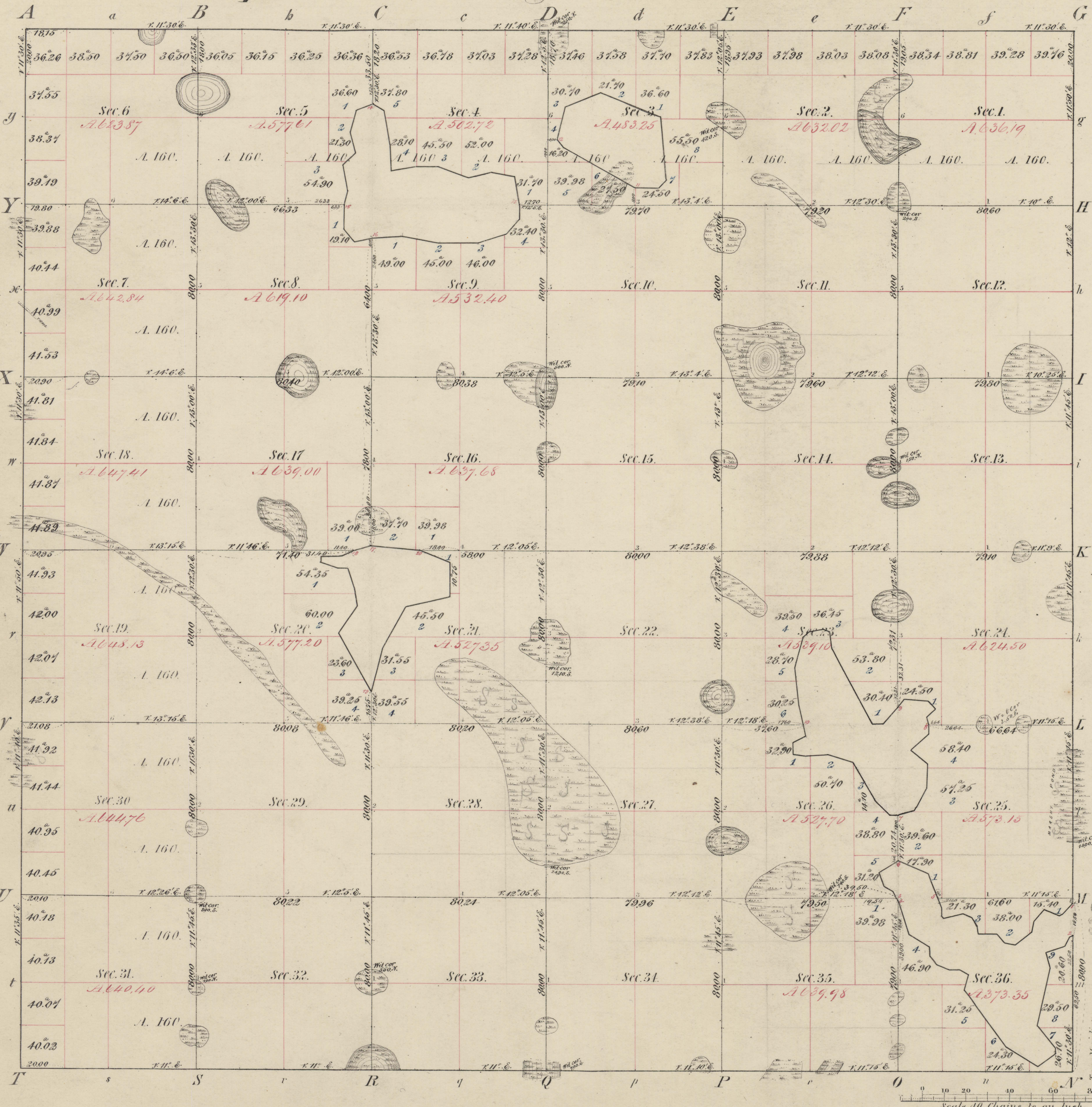


Township N<sup>o</sup> 113. N. Range N<sup>o</sup> 40. W. 5<sup>th</sup> Mer. Min.

Meanders of											
Posts	Courses	Ch. <sup>l</sup>	Lk. <sup>s</sup>	Posts	Courses	Ch. <sup>l</sup>	Lk. <sup>s</sup>	Posts	Courses	Ch. <sup>l</sup>	Lk. <sup>s</sup>
No 6 & 7 Meanders 15. 42. 40											



Total number of Acres 21,809.71

Surveys Designated	By Whom Surveyed	Date of Contract	Amount of Surveys	When Survey Completed	When p <sup>d</sup> for and ch <sup>d</sup> in the Sur. Gen <sup>l</sup> 's acc <sup>t</sup>
Township lines	W. J. Neely	Oct 15 <sup>th</sup> & Aug <sup>st</sup> 1858	M. Ch. Lks. 72. 00. 00.	Sept 27 <sup>th</sup> 1858	
Subdivisions	M. Black	25 <sup>th</sup> June 1859	70. 56. 06.	1 <sup>st</sup> Sep <sup>r</sup> 1859	

The above Map of Township N<sup>o</sup> 113 North of Range N<sup>o</sup> 40 West of the 5<sup>th</sup> Principal Meridian of Minnesota is strictly conformable to the field notes of the survey thereof on file in this Office, which have been examined and approved.

Surveyor General's Office.  
St Paul Dec<sup>r</sup> 10<sup>th</sup> 1859

Charles L. Emerson  
Sur.<sup>o</sup> Gen<sup>l</sup>

3<sup>rd</sup> Stan<sup>d</sup> Par<sup>l</sup>