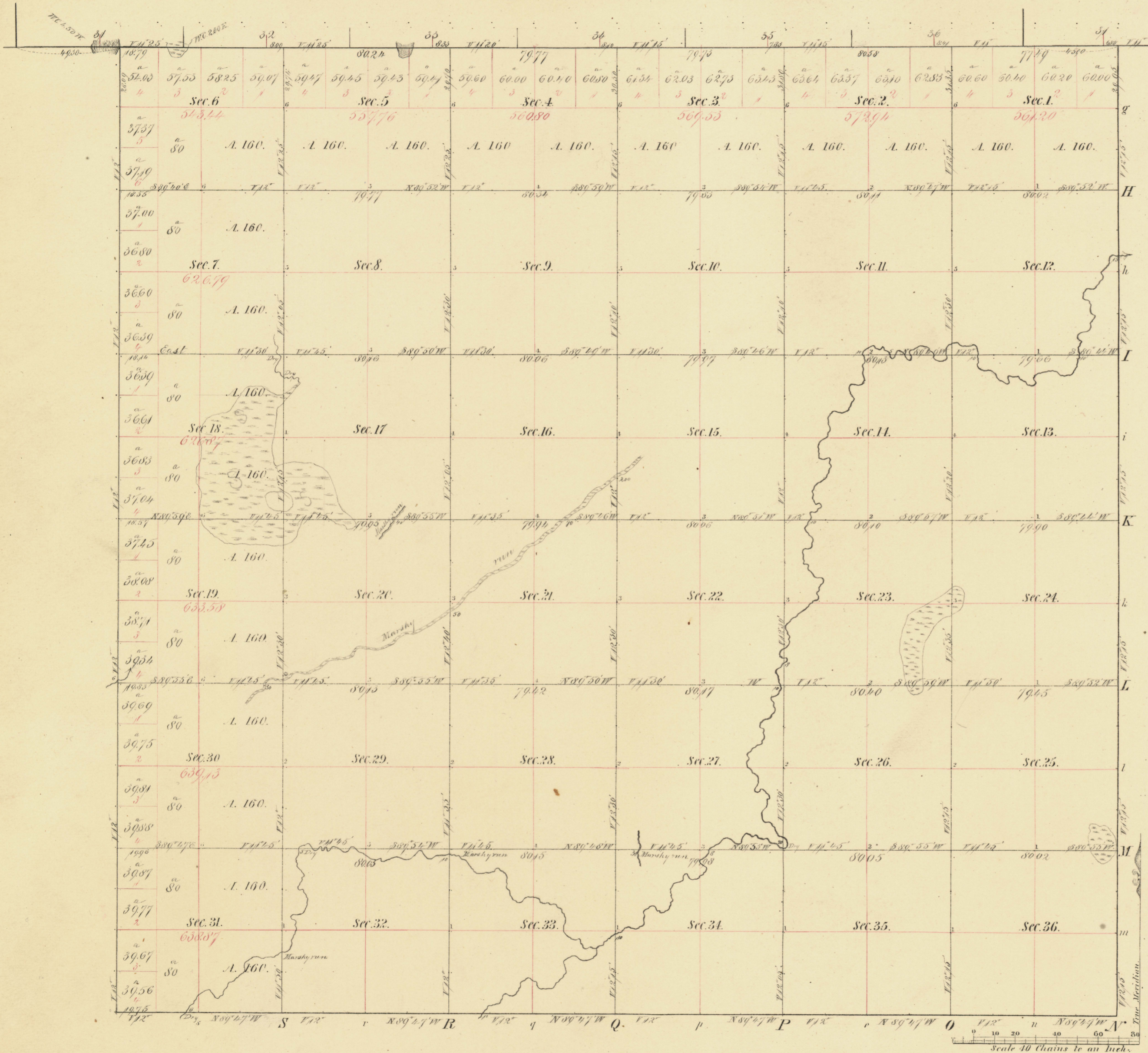


Township N^o 112 N Range N^o 42 W 5th Mer. Minn.



Meanders of								
Posts	Courses	Ch ^s Lk ^s	Posts	Courses	Ch ^s Lk ^s	Posts	Courses	Ch ^s Lk ^s

Total number of Acres 22530.91

Surveys Designated	By Whom Surveyed	Date of Contract	Amount of Surveys	When Surveyed	When p ^d for and ch ^d in the Sur ['] Gen ^{'s} acc [']
ETWSS Boundary Township lines No	J.M. Bishop	May 26 th 1866	M. Chs Lks.	1866	
Subdivisions	Jewett & Hane	April 6 th 1867	59. 68. 79	1867	

The above Map of Township N^o 112 N of Range N^o 42 W 5th Principal Meridian Minnesota is strictly conformable to the field notes of the survey thereof on file in this Office, which have been examined and approved.

Surveyor General's Office.
St. Paul Feb 24th 1868.

L. Nutting
Sur. Genl