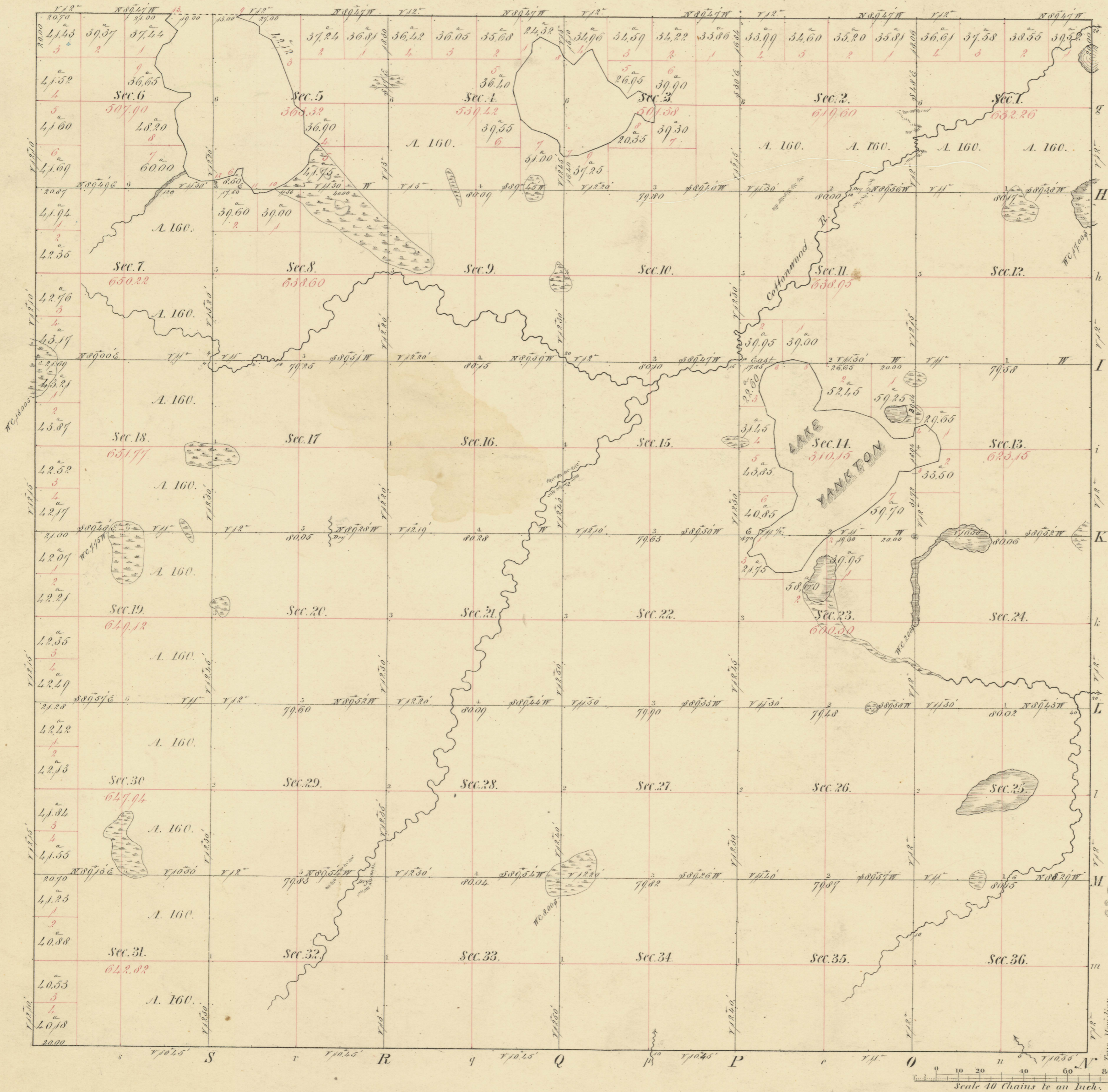


Township N^o 109 N Range N^o 42 W 5th Mer.



Total number of Acres. 22,016, 90

Surveys Designated	By Whom Surveyed	Date of Contract	Amount of Surveys	When Surveyed	When p ^d for and ch ^d in the Sur. Gen ^l 's acc ^t
N.E. & W	J.W. Bishop	May 26 th 1866	M. chs Lks.	1866	
Township lines & Subdivisions	H. J. Neely	July 21 st 1858		1858	
	Jenett & Howe	April 6 th 1867	67.29 - 50	1867	

Meanders of								
Posts	Courses	Ch. ^s Lk. ^s	Posts	Courses	Ch. ^s Lk. ^s	Posts	Courses	Ch. ^s Lk. ^s
<i>Meanders of Miles 7 1/2 Chains 10 Lines</i>								

The above Map of Township N^o 109 North of Range N^o 42 West of the 5th Principal Meridian Minnesota is strictly conformable to the field notes of the survey thereof on file in this Office, which have been examined and approved.

Surveyor General's Office, St. Paul, November 7th 1867

L. Kuttiny Sur. Genl.