



LYON COUNTY 5 YEAR CONSTRUCTION PLAN

- 2002 CONSTRUCTION
- 2003 CONSTRUCTION
- 2004 CONSTRUCTION
- 2005 CONSTRUCTION
- 2006 CONSTRUCTION
- X WATER RETENTION

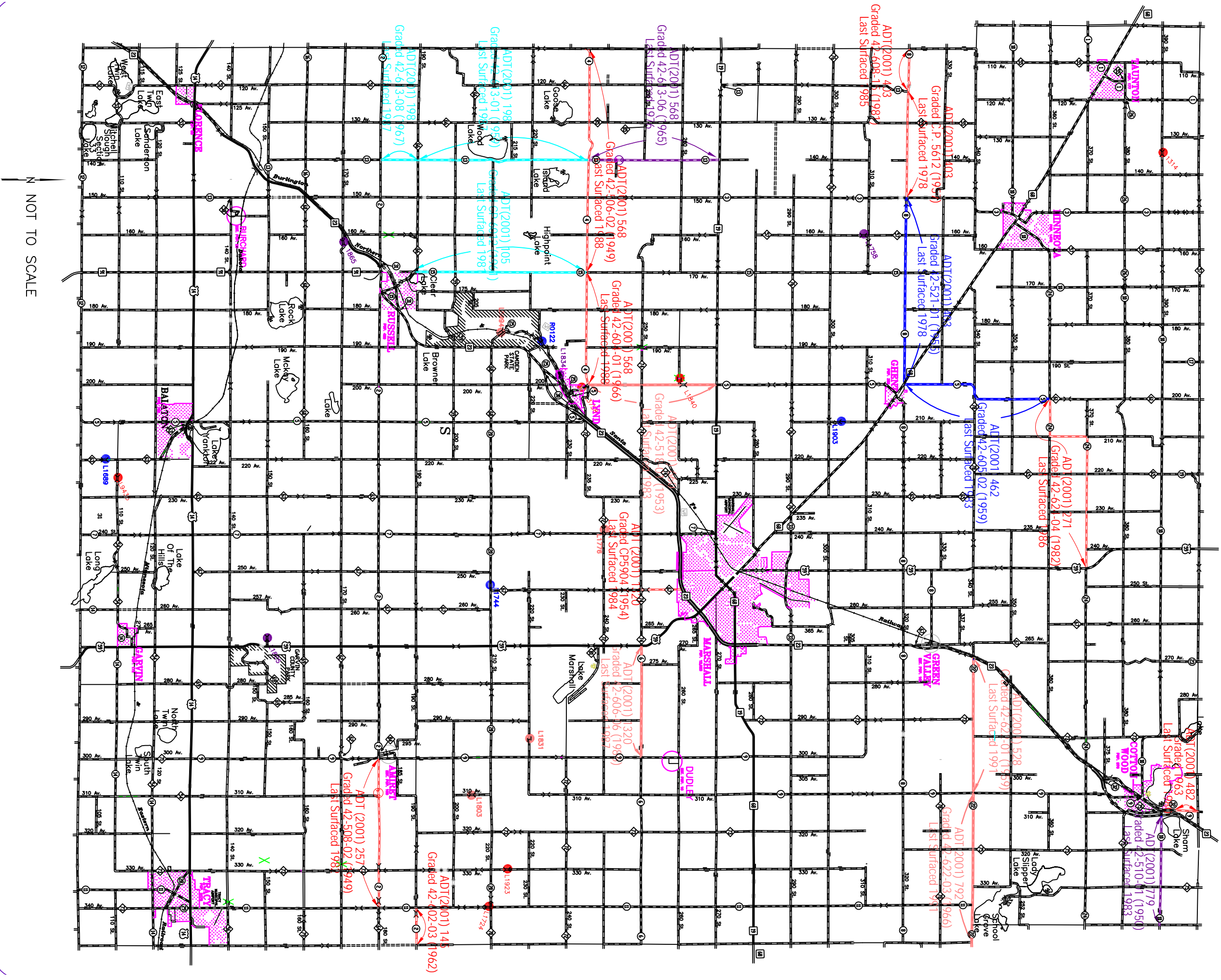


FIGURE 6-10

5-YEAR CONSTRUCTION PLAN LYON COUNTY TRANSPORTATION PLAN