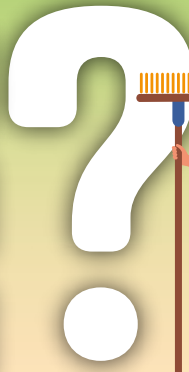


Spring Cleaning Moving Shop Cleaning



Household Hazardous Waste Accepts:

- Paint
- Spray Paint
- Lawn and Garden Chemicals
- Small quantities of oil or oil filters*
- Household Chemicals
- Mattresses and Box Springs*
- Car Seats
- Rigid Styrofoam
- Christmas Lights
- Electronics*
- Shredded Paper
- Encyclopedias
- Rechargeable Batteries
- Fluorescent Lights*
- Needles (sharps) - must be in sharps container
residential only
- Electronic Charging Cords
- Cellphones

***Fees may apply**

Other options: Alter Metal, local thrift stores,
Habitat for Humanity ReStore

Medication Disposal: HyVee and Tracy Drop
locations, Lyon County Law Enforcement Center

Lyon County Landfill Accepts:

- Tires*
- Appliances including microwave ovens*
- Electronics*
- Construction, remodeling & demolition materials*
- Metal Objects
(poles without cement, grills, bed frames, etc)
- Trash*
- General trash can be self-hauled to the landfill
\$10 up to 340 pounds
- Small appliances such as box fans, vacuum
cleaners, mixers, blenders, etc are trash
- Radios, CD players and other small
battery operated devices are trash only.

→ **PLEASE!** ←
**Do NOT place any of these items into
curbside recycling or community drop sites.
We do not recover these items from these
containers!**

These items must be brought to each facility
during operating hours only and brought to the
offices. Absolutely no unattended drop offs please!

Disposal guides are located on the Lyon County, MN website at www.lyonco.org
Questions? Please call the Environmental office or landfill for assistance.
Environmental Office: (507) 532-8210
Landfill: (507) 865-4615

Businesses **MUST** call the
Household Hazardous Waste Facility
BEFORE coming with items.
*Leave a message if needed and wait for a call back
before dropping off items*

HOUSEHOLD HAZARDOUS WASTE FACILITY
504 Fairgrounds Road | Marshall, MN 56258
Phone: (507) 532-8210

*Hours: Monday-Friday 8am-4:30pm;
Second Saturday of each month 9am-2pm*

LYON COUNTY LANDFILL
2025 200th Avenue | Lynd, MN 56157
Phone: (507) 865-4615

*Hours: Monday-Friday 6am-4pm;
Saturday 7am-noon*

POSTAL CUSTOMER

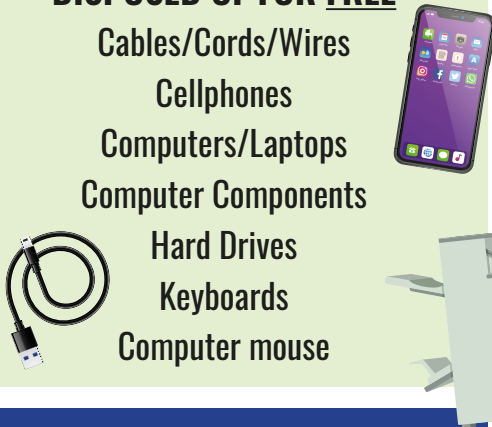
PRST STD
EDDM
U.S. POSTAGE
PAID
MARSHALL, MN
PERMIT NO. 20

ELECTRONIC and APPLIANCE RECYCLING

WONDERING WHAT TO DO WITH ELECTRONICS OR APPLIANCES THAT ARE BROKEN OR NO LONGER NEEDED?
Call the Lyon County Landfill (507) 865-4615 or the Environmental Office (507) 532-8210 for details

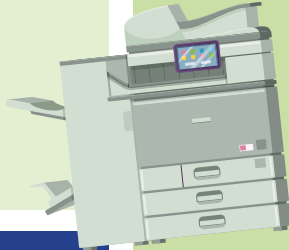
Accepted at the Landfill or Household Hazardous Waste

THESE ITEMS CAN BE DISPOSED OF FOR FREE



Cables/Cords/Wires
Cellphones
Computers/Laptops
Computer Components
Hard Drives
Keyboards
Computer mouse

THESE ITEMS CAN BE DISPOSED OF FOR A SMALL FEE*



Flat Screen Monitors
CRT Monitors
DVD Players
Fax Machines
VCR Machines
Projectors
Scanners
Televisions
Copy Machines

PLEASE NOTE: NONE of these items
should be placed into recycling.
BUSINESSES - please call ahead!



YARD & TREE WASTE should
go to the local yard/waste
site in the community -
NOT accepted in trash
or recycling.

Miscellaneous pieces of wood
- Landfill to the Construction/
Demolition area only - NOT
accepted in trash or recycling.

LANDFILL ONLY FOR A FEE*

Washer/Dryer Trash Compactor
Refrigerator Water Heater -
Microwave Oven call for details
Oven RV Refrigerator
Air Conditioner Freezer
Water Cooler Dishwasher
Dehumidifier



NON-Recyclable Items

THESE ITEMS CAN BE THROWN AWAY*



Telephone systems
Speakers
Calculators
VCR/VHS Tapes
Radios
CD Players
Cameras
Boom boxes
Stereo Equipment
Dishes
Game Systems
Box/Room Fans
Mixers
Blenders
Vacuum Cleaners
Toasters
Coffee Makers
Toaster Ovens
Water Softener - call for details
Carpet
Furniture

Large, bulky plastic items such as
toys, totes, pools, plastic sheeting,
plastic tubing

Please call for a detailed list

SHOP CLEAN OUT Broken, filthy or unwanted electrical
cords - *trash only* • Random plastic items; 5 gallon pails, mineral tubs,
empty oil containers, tarp - *trash only* (not accepting in recycling) •
Miscellaneous metal items - *landfill metal box or Alter Metal* • Unused farm or
weed chemicals - *call the household Waste facility in Marshall for assistance before
bringing items* • Empty 2 1/2 gallon - *call the landfill for assistance before bringing
items* • Tires - *call landfill for details and pricing*

Call for details or assistance!
It is against the law to throw certain
electronic devices into the trash.

*NOTE: Some items may be accepted
elsewhere. Call for details.